



Wirelessly Connect User Devices to Displays and Room Peripherals

Bring Your Own Meeting with ScreenBeam Conference

As we look to the future, we see our offices as places for collaboration between both in-person and remote meeting participants. Enabling the hybrid workforce to be successful requires technology that is flexible and simple enough for any employee to use.

ScreenBeam Conference wirelessly connects the room camera, microphone and soundbar to the host's device. Users can participate in a scheduled or ad-hoc meeting using their laptop and UC conferencing service of choice and take full advantage of the room peripherals. ScreenBeam Conference eliminates contact with shared touchpoints for a safer meeting experience.



ScreenBeam 1100 Plus

Software included free and without a licensing fee on ScreenBeam 1100 Plus.

[Get a Demo](#)

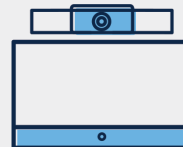
[Watch Video](#)

Easy as 1, 2, 3

ScreenBeam Conference delivers flexible and simple BYOM with agnostic support for video conferencing tools and contactless wireless display.



STEP 1: Launch the ScreenBeam Conference app and select the ScreenBeam receiver.



STEP 2: Automatically pair wirelessly to the room resources (camera, mic, speakers).



STEP 3: Start your meeting by launching your web conferencing service of choice.

Works With These Popular Platforms, and More!



ScreenBeam Conference Key Advantages

ScreenBeam Conference creates effective hubs for collaboration between in-room and remote meeting participants by being flexible enough to use in any space and simple enough to be used by any employee or guest.

Flexible

Avoids issues when room is locked into a designated conferencing tool

Simple

Enables automatic wirelessly connectivity to room AV equipment

Collaborative

Allows remote meeting participants to view content shared on room display

Contactless

Removes contact with shared dongles and cables with app-free wireless sharing

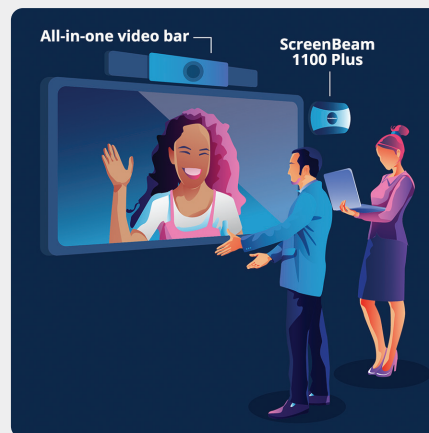
Budget-friendly

Reduces cost by eliminating licensing fees and dedicated hardware

How Does it Work?

ScreenBeam Conference allows in-room meeting participants to wirelessly connect to the room display and the room camera, microphone and speaker. These in-room devices are fed back to the user's PC allowing them to join the meeting using any web conferencing platform. The entire process eliminates contact with any touch points such as dongles or cables.

Standing meetings and huddle spaces



Traditional conference rooms



Try ScreenBeam Conference Now

Bottom line...hybrid work requires places for safe collaboration between in-person and remote meeting participants. ScreenBeam Conference provides flexibility beyond a traditional UC room system without the technical limitations or added cost. To sum up, ScreenBeam Conference ensures an engaging experience between remote and in-person meeting participants, supports the host's personal choice of web conferencing tool, and works easily in any environment, all while meeting company safety protocols.

[Get ScreenBeam Conference](#)

(requires a ScreenBeam 1100 Plus receiver)

screenbeam.com

© 2022 All rights reserved. ScreenBeam and the ScreenBeam logo are registered trademarks owned by ScreenBeam Inc. All other names are properties of their respective owners. Specifications subject to change without notice. 060922-v5

ScreenBeam®